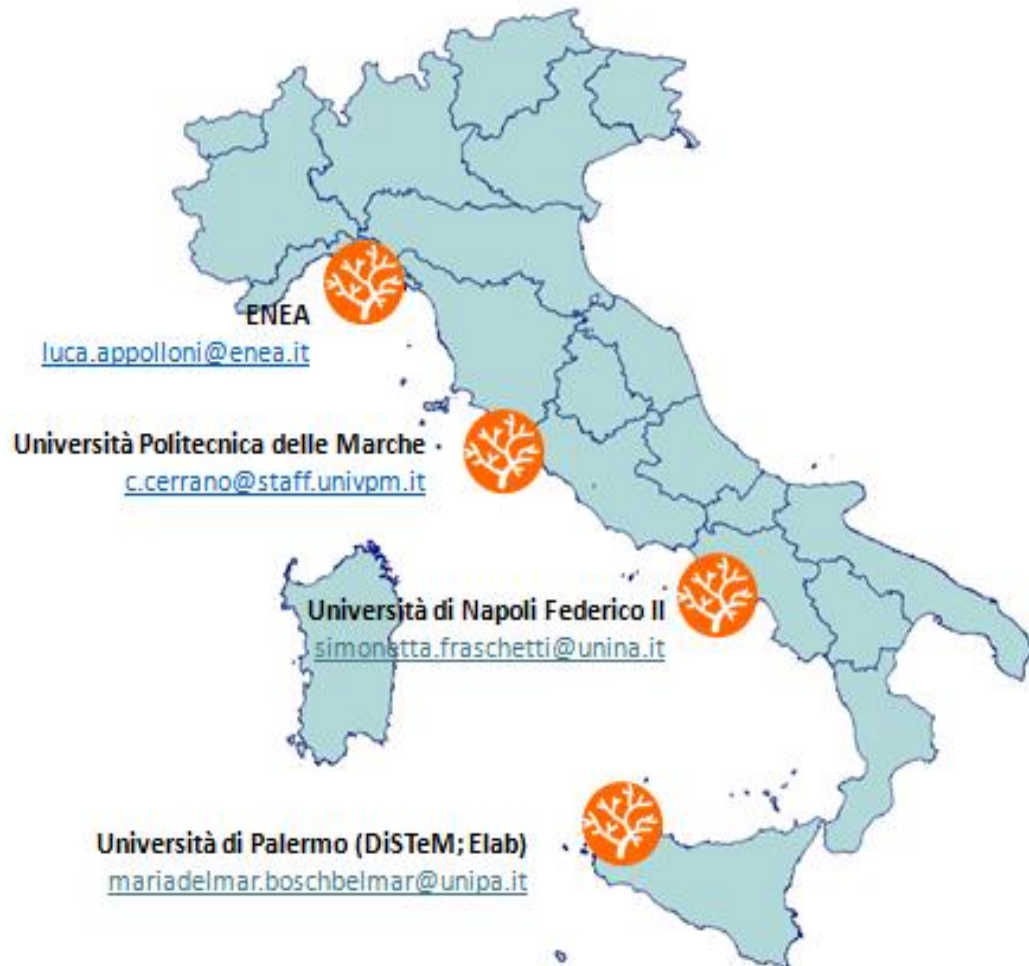


Sampling week - Coralligenous

[REFERENTI mariadelmar.boschbelmar@unipa.it;](mailto:mariadelmar.boschbelmar@unipa.it)

simonetta.fraschetti@unina.it

NBFC Community: luca.appolloni@enea.it



Campania (UNINA):

- Banco di Santa Croce - 14 Maggio 2025
- Scoglio del Vervece - 15 Maggio 2025
- Capri - 16 Maggio 2025

Ricercatori coinvolti: Alberto Colletti, Simone Maria Santo Musumeci, Sara De Benedictis, Chiara Silvestrini, Francesca Acampa, Patrizia Stipcich

Sicilia (UNIPA):

- AMP Capo Gallo – Isola delle Femmine - 12, 13, 14 Maggio 2025

Ricercatori coinvolti: Mar Bosch Belmar, Francesco Paolo Mancuso, Mario Francesco Tantillo

Liguria (ENEA):

- Palmaria, Tino e Tinetto – 15-18 Maggio 2025

Ricercatori coinvolti: Luca Appolloni, Chiara Lombardi

Toscana (UNIVPM):

- Argentario – 15 Maggio

Ricercatori coinvolti: Martina Coppari, Teo Marroco, Chiara Gregorin, Veronica Marchesi



NATIONAL
BIODIVERSITY
FUTURE CENTER



BIODIVERSITY
SAMPLING WEEK

MARE

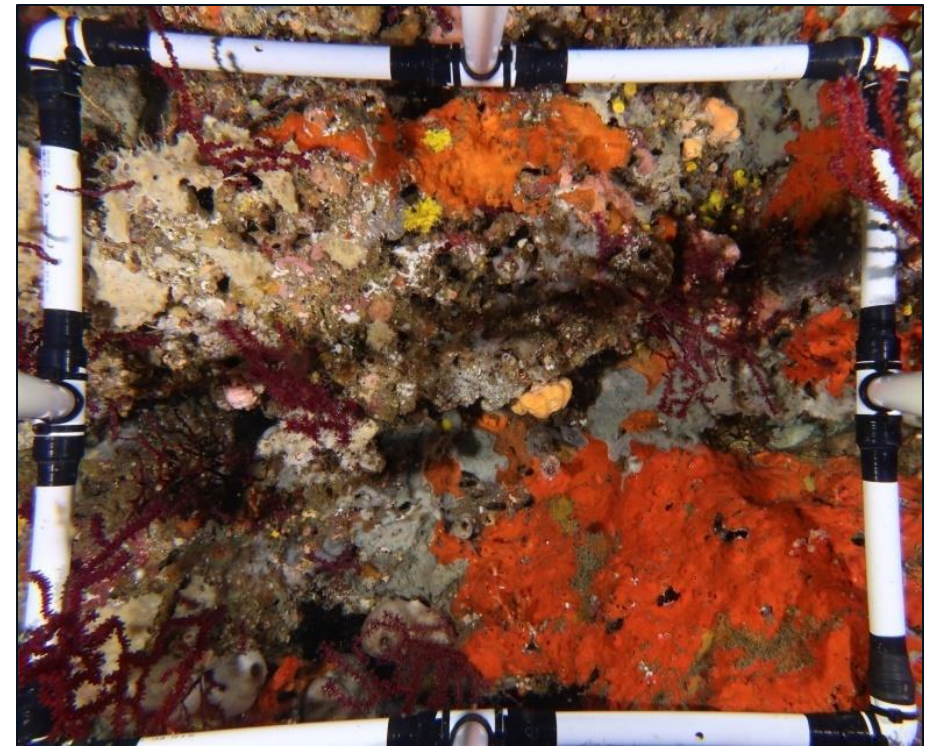
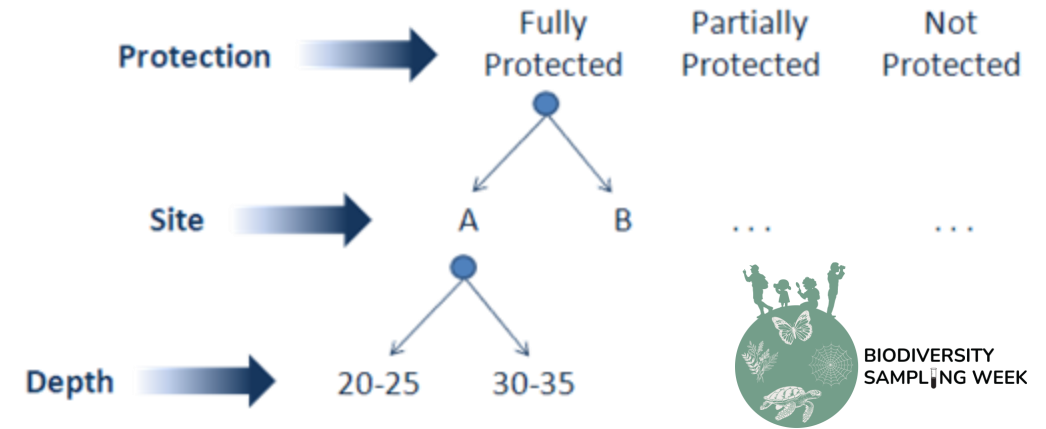
Scientists NBFC
& Citizen's
engagement

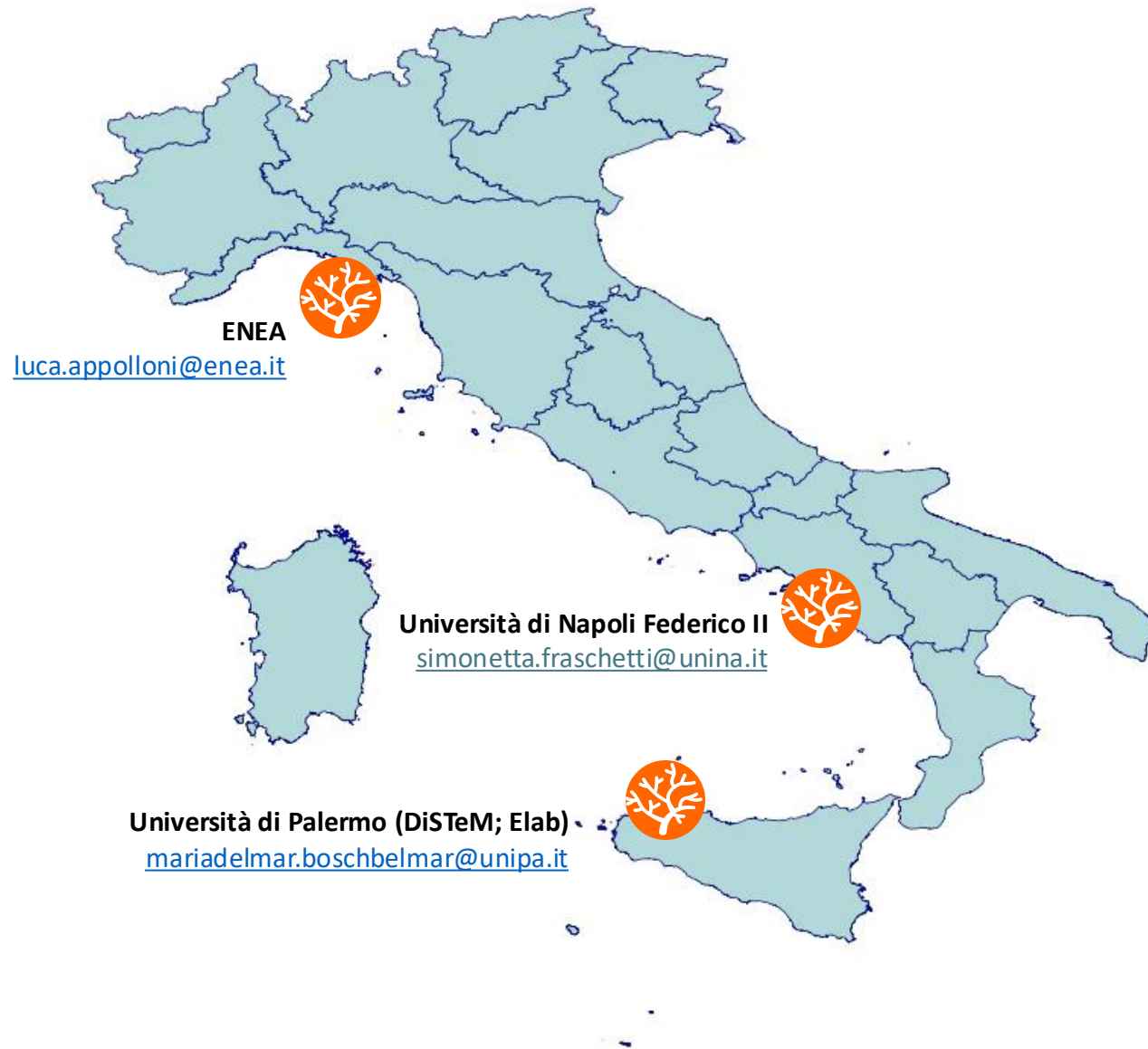
Data Manager: Alberto Colletti (alberto.colletti@unina.it); Patrizia Stipcich (patrizia.stipcich@unina.it)

Social Media Manager: Marzia Cianflone (marzia.cianflone@unina.it)

Methods

- Identify three areas corresponding to the three conditions: fully protected (MPA zone A), partially protected (MPA zone B, C; FRAs), not protected (lack of any regulation of human activities)
- Within each condition, select 2 sites about 100 m apart with similar exposition and slope (vertical/sub-vertical)
- At each site, two depth ranges (*e.g.* 20-25 m and 30-35 m): 10 photographic samples of 50x40 cm frame
- Identify all sessile species at the lowest possible taxonomic level using image analysis software (*e.g.* ImageJ, Photoquad)





MARE

Scientists NBFC
& Citizen's
engagement



Coralligeno



BIODIVERSITY
SAMPLING WEEK